

# Thermoflo

# PMP 098/112

**Multi-Speed Direct Drive  
or  
Variable Speed ECM Motor**

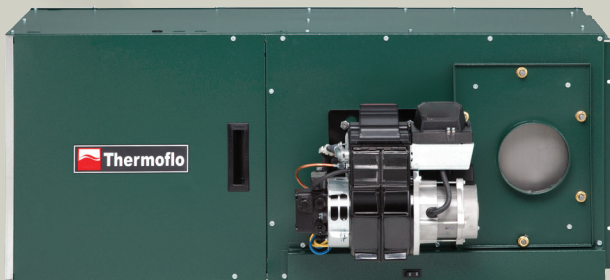
**Low Profile  
Packaged Multi-Position  
Oil Furnace**

## Ratings - 2 Sizes

70,000 to 112,000 Btuh Input  
0.50 to 0.80 GPH #2 Fuel Oil



Up flow or Counter flow



Horizontal - Left or Right

- ❑ AFUE's up to 86.4%
- ❑ **Multi-Position installation**
  - High Boy (up flow)
  - Horizontal – Left or Right
  - Counter Flow (down flow)
- ❑ **Stainless steel heat exchanger**
- ❑ **Tube style aluminized steel secondary heat exchanger**
- ❑ **Large front access clean-out secured with studs and nuts**
- ❑ **Slide-out blower/motor - easily removed for service**
- ❑ **Continuous fan on switch**
- ❑ **Burner and controls**
  - Factory-wired with simple plug-in connections
  - PSC motor
  - Solid state ignitor and solenoid valve



**Thermoflo®**

# RATINGS

Model	Firing Rate	Input	Output	Direct Drive Blower (PCS)				*Energy Star Certified Variable Speed Blower (ECM)				Maximum cooling capacity (tons)
				Blower size	Blower motor hp	Blower CFM		Blower Size	Blower Motor hp	Blower CFM Range		
						@ 0.25 WC	@ 0.50 WC			min	max	
PMP-098	0.50	70,000	58,000	10-8	1/3	860	795	10-8	1/2	750	1350	3.0
	0.60	84,000	69,000	10-8	1/3	1030	925	10-8	1/2	750	1350	3.0
	0.70	98,000	81,000	10-8	1/3	1170	1050	N/A				
PMP-112	0.68	95,200	81,000	10-10	1/2	1165	1080	10-10	1/2	900	1450	3.5
	0.80	112,000	94,000	10-10	1/2	1300	1200	10-10	1/2	900	1450	3.5

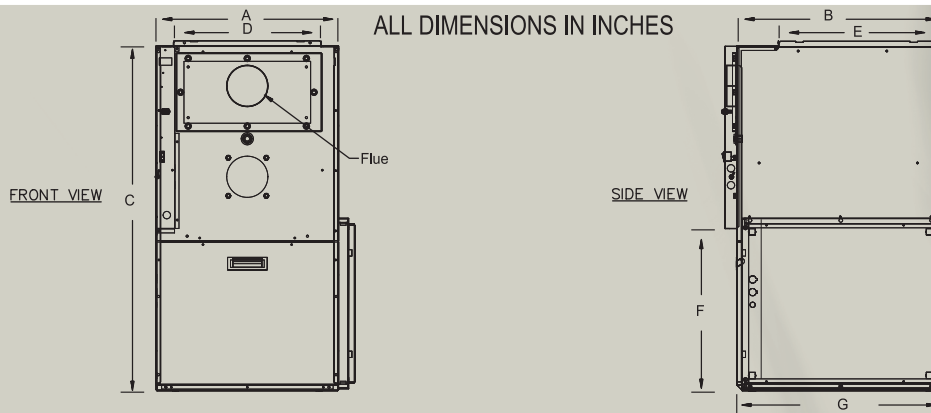
\* As an Energy Star partner Williamson has determined that this product with Variable Speed Motor meets Energy Star guidelines for energy efficiency, Note: Filter sizes required: PMP-098 (1) 20"X20" - PMP-112 (1) 24"X24" Refer to installation manual for detailed air flow information.

PMP-098 Chimney Venting		
Burner	Input (GPH)	AFUE %
Beckett AFG	0.50	85.2%
	0.60	85.1%
	0.70	83.9%
Carlin EZ-LF	0.50	86.2%
	0.60	85.4%
	0.70	83.8%
Riello 40-F3	0.50	86.4%
	0.60	85.9%
	0.70	84.5%

PMP-112 Chimney Venting		
Burner	Input (GPH)	AFUE %
Beckett AFG	0.68	85.3%
	0.80	85.4%
Carlin EZ-LF	0.68	85.2%
	0.80	85.3%
Riello 40-F3	0.68	85.8%
	0.80	85.4%

# DIMENSIONS

ALL DIMENSIONS IN INCHES



Model	Furnace Casing			Warm air supply (top)		Return air (side)		Flue Pipe diam.	Shipping Weight (pounds)
	Width A	Depth B	Height C	Width D	Depth E	Width F	Depth G		
PMP-098	16-7/8	20-1/8	40-3/4	16	19	19	19	5	125
PMP-112	21-3/4	25-3/4	41-1/2	17-3/4	18-3/4	23	19	5	153

Note: Refer to installation instructions for details and proper installation.

# EQUIPMENT

- Factory-assembled
- Rugged 22-gauge cabinet with powder coat finish
- Stainless steel heat exchanger
- Variable Speed ECM fan center compatible with 2-stage A/C compressors
- Continuous fan on selector switch
- High-efficiency flame retention burner (Beckett AFG, Carlin or Riello)
- Easy access panel for wiring and control board access



In the interest of continual improvement in product and performance, Williamson reserves the right to change specifications without notice.

# WARRANTY

- 20 year limited warranty on heat exchanger
- 5-year limited warranty on parts
- Optional 5 - or 10-year parts and labor warranty



**Thermoflo**

N93 W14635 Whittaker Way, Menomonee Falls, WI 53051

[www.williamson-thermoflo.com](http://www.williamson-thermoflo.com)

Form No. T-113 (12/23)