

## Ratings

91,000 to 119,000 Btuh Input

0.65 to 0.85 GPH #2 Fuel Oil



## Temp-O-Matic High Boy Oil Furnace

- ▣ AFUE's to 83.5%
- ▣ Heat exchanger
  - Heavy gauge "wrap-around" design
  - Front flue with top or right side venting option
  - Interior baffling for maximum efficiency
  - Spring-loaded observation port with test port
  - Heavy gauge burner mounting plate with studs and nuts
- ▣ Blower
  - Multi-speed direct drive
  - Slide-out blower/motor – easily removed for service
- ▣ Cabinet
  - Appliance finish powder coat paint
  - Heavy gauge with "Seal-Tite" construction
  - Foil-faced insulation for hand-cool surface
  - Fully-enclosed burner and controls
- ▣ Burner and controls
  - Factory-wired with simple plug-in connections
  - PSC motor
  - Solid state ignitor



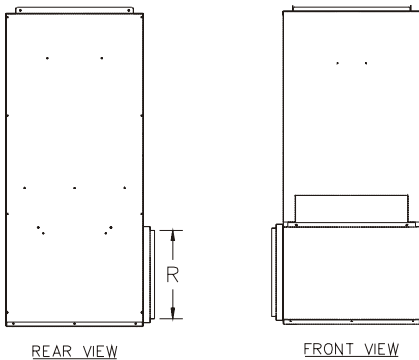
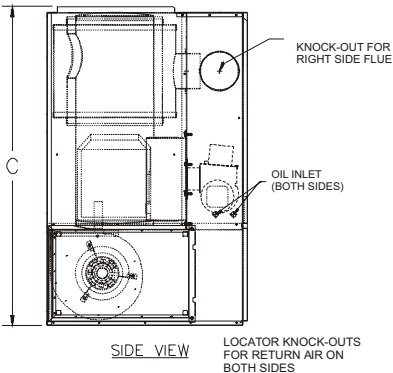
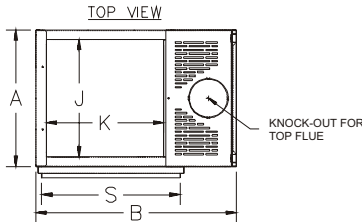
# RATINGS

Model	Input	Output	Firing rate	Installed nozzle	AFUE with electric damper	AFUE without electric damper	Blower size	Blower motor hp	Maximum cooling capacity	Ship wt. (pounds)	Blower CFM	
	(Btuh)	(Btuh)	(GPH)						(tons)		@ 0.25° WC	@ 0.50° WC
<b>Direct-drive units</b>												
THB-105	91,000	79,100	0.65		83.5	81.0	GT10-10	1/3	3	210	975	925
	105,000	90,500	0.75	✓	82.0	80.5	GT10-10	1/3	3	210	1100	1050
	119,000	101,500	0.85		81.0	80.0	GT10-10	1/3	3	210	1225	1150

**NOTE: Filter size required: THB-105 - (1) 16" x 24"**

# DIMENSIONS

ALL DIMENSIONS IN INCHES



Model	Furnace casing			Warm air supply		Return air		Flue pipe diam.
	Width A	Depth B	Height C	Width J	Depth K	Width R	Depth S	
<b>THB-105</b>	23	33-1/2	53-3/4	19-3/4	19-3/4	15	23	6

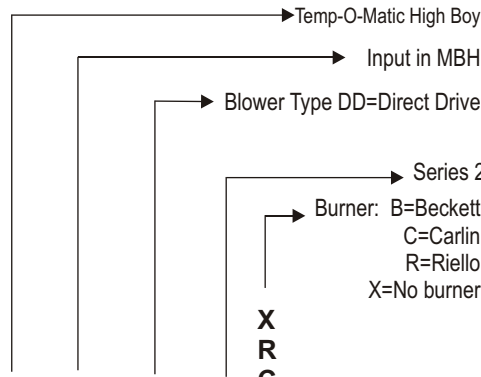
**Note:** THB furnaces are approved for "0" clearance to combustible construction. Refer to installation manual for details and proper installation.

# EQUIPMENT

- Factory-assembled
- Hot-rolled steel heat exchanger, pressure tested to assure leak-tight construction
- Heavy 14-gauge heat exchanger
- Rugged 20-gauge cabinet with powder coat finish
- Air conditioning fan center
- Leveling legs
- Electrical box with external low-voltage terminal strip
- Limit control with continuous fan on selector switch
- External filter rack provided (Note 1)
- Barometric damper provided
- High-efficiency flame retention burner (Beckett, Carlin, Riello)
- Optional two-stage fuel unit

# ORDER CODE

# WARRANTY



THB - 105 - DD - S2 - B - W

- Limited lifetime warranty on heat exchanger
- 5-year limited warranty on parts
- Optional 5- or 10-year parts and labor warranty

**Note 1:** Attach an external filter rack after cutting opening in side for return air duct connection. Either side can be used.



8201 West Calumet Road • Milwaukee, WI 53223

www.williamson-thermoflo.com

Form No. W-104R1(0903)

